

# CERTIFICATE OF LOCATION OF GOVERNMENT CORNER

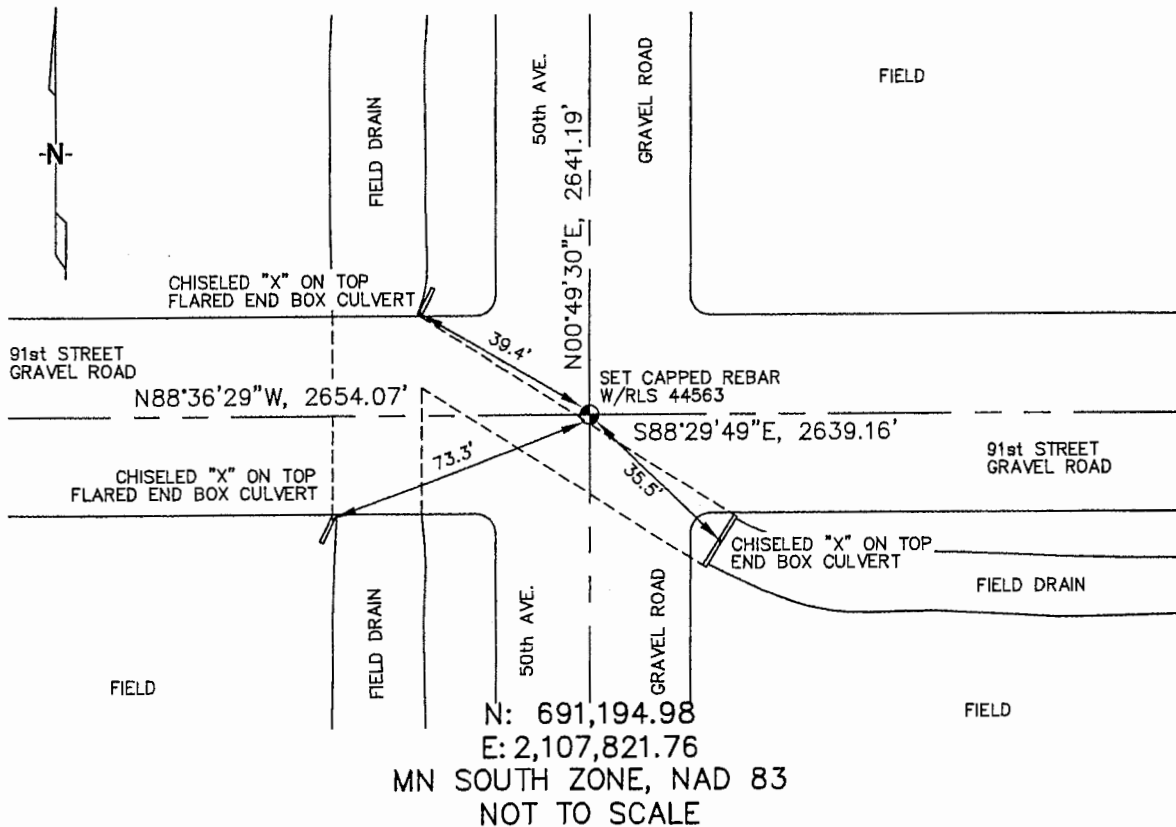
SOUTHWEST Corner of Section 13, Township 106N, Range 43W, 5TH P.M.

STATE OF MINNESOTA, County of MURRAY

At the corner location shown on the sketch :

- On \_\_\_\_\_ found \_\_\_\_\_
- left monument as found,  lowered monument,  removed monument (explain)
- On 3/22/2006 set 5/8" REBAR W/ CAP: RLS 44563 @  
INTERSECTION OF GRAVEL ROADS.

### Sketch of reference ties



Statement of evidence relative to this corner location is on back page

I hereby certify that this document and the data contained herein was prepared by me or under my direct supervision.

*Thomas J. Zeff*  
Thomas J. Zeff

6/28/06  
Date

Registration No. 44563

- Land Surveyor,  Professional Engineer
- County Surveyor,  County Engineer

OFFICE OF THE COUNTY RECORDER

County of \_\_\_\_\_

SEP 28 2006

I hereby certify that this document was filed in the Co. Recorders office at \_\_\_\_\_ .M. on the day of \_\_\_\_\_ A.D., 20

County Recorder James V. Johnson  
By \_\_\_\_\_, Deputy

DOCUMENT NO. \_\_\_\_\_

STATEMENT OF EVIDENCE:

SOUTHWEST CORNER, SECTION 13, T. 106 N., R. 43 W.,  
MURRAY COUNTY, MINNESOTA

1866 J.W. Bishop, US. Deputy Surveyor, monumented corner.

3/22/2006 Uiteig Engineers, Inc., Survey Crew, Brian Payne Party Chief,  
found nothing. Set a 5/8" rebar with cap: RLS 44563 at intersection  
of gravel roads.

Ties: SE-35.5' to chiseled "X" on top of flared end of box culvert;  
SW-73.3' to chiseled "X" on top of flared end of box culvert;  
NW-39.4' to chiseled "X" on top of flared end of box culvert;  
N-2641.19' to W 1/4 corner, Section 13;  
E-2639.16' to S 1/4 corner, Section 13;  
W-2654.07' to S 1/4 corner, Section 14.